



Bathing establishment Fact Sheet

Bathhouse name	REGINA PACIS PARROCCHIA BORGOTARO
Address	VIA LUNGOMARE DI PONENTE
City	MARINA DI MASSA (MS)
Contacts	+39 366 4507763
Website	https://www.facebook.com/p/Bagno-Regina-Pacis-100057621182666/

TESTED BY: [Handy Social Promotion Association Surpassable](#) in summer 2023

Please note The following information refers to the verification date shown at the bottom of each card. **The Association** is not responsible for any significant changes made by the property after the visit.

Summary

Bathing establishment Fact Sheet	1
Arrival at the facility	2
Private/public parking.....	2
Pathway from the parking lot to the main entrance	2
Reception.....	3
Bar/restaurant	4
Internal pathways and common services	4
Internal pathways.....	4
Toilet and shower accessible to guests with reduced mobility	4
Changing room	6
Beach.....	6
Children's play area	7
Swimming pool	7
Doctors' Offices/Healthcare Facilities	8



Project carried out with the contribution of the





Arrival at the facility

Private/public parking



Presence of private parking	NO
Type of private car park	Not present
Presence of parking space reserved for people with disabilities	NO
Public parking nearby	YES with n. 1/2 places reserved for the disabled at approx. 50/100 meters
Type of public car park	asphalt
	

Pathway from the parking lot to the main entrance

Pathway from the car park to the entrance	From the public car park via connecting ramps from the road surface to the sidewalks. The entrance is accessible by overcoming a ramp with several difficult differences in height
There are markers and tactile maps	NO





Usable door/entrance width	more than 90 cm
	

Reception

Umbrella booking system	<input type="checkbox"/> Via web <input checked="" type="checkbox"/> By phone <input checked="" type="checkbox"/> On-site
Presence of multilingual staff	YES
Presence of plant plan with key to services available	NO
Presence of visuo-tactile map	NO
Bulletin board/information panels at an average height of 130 cm in a well-lit area and font size at least 14 dpi with a contrast ratio greater than 4.5:1	NO
The staff attended training courses on welcoming people with different disabilities	NO





Bar/restaurant

Type of venue	missing
Access to the premises	There are a few vending machines for drinks and snacks
Types of tables	legged
Space underneath the tables from the floor	more than 65 cm

Internal pathways and common services

Internal pathways

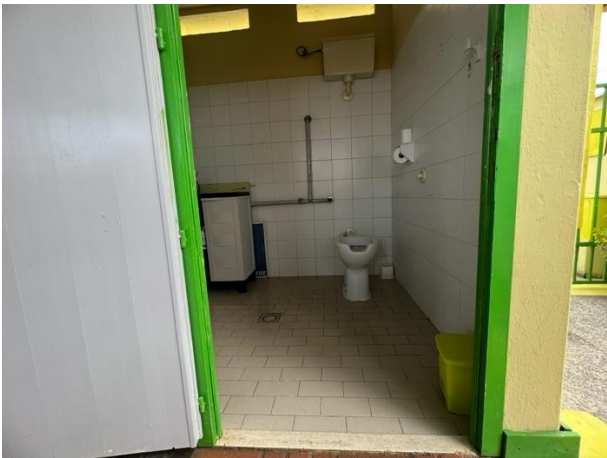

Indicate whether the pathways connecting the entrance to the beach are flat or with ramps in addition to those already described	Obstacle-free paths
--	---------------------

Toilet and shower accessible to guests with reduced mobility

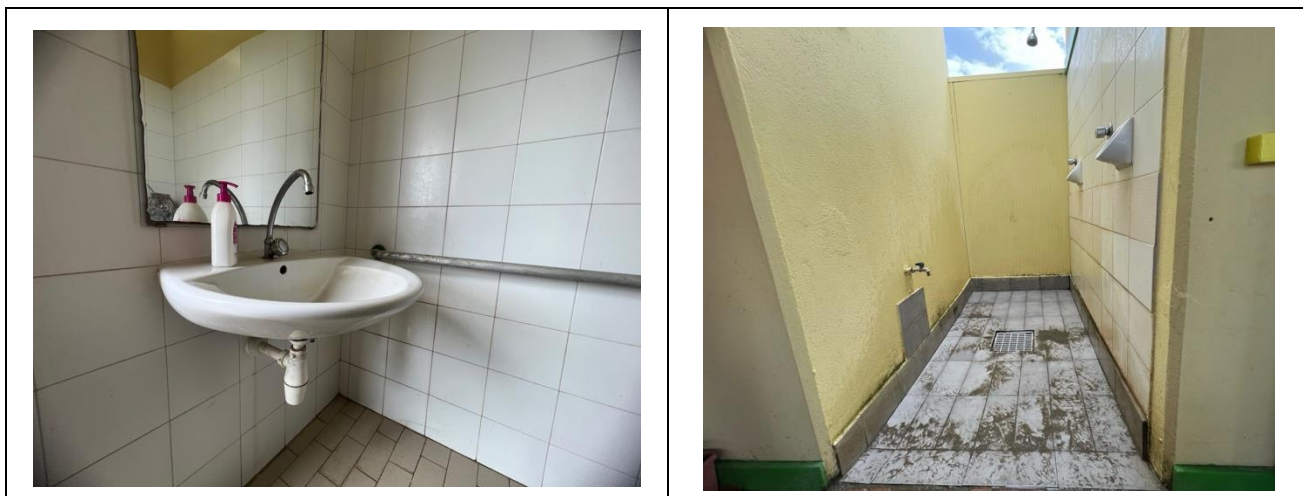
Number of toilets accessible/usable by guests with reduced mobility	1
Access to the premises	Flat
Usable width of the entrance door	85 cm
Toilet height	50 cm
Open front toilet seat	YES
Support handles	to the right of the toilet
Flexible hand shower at the side of the toilet	NO
Electric doorbell/phone	NO





Washbasin with space underneath for wheelchair	66 cm
Height from the ground on the bottom edge of the mirror	90 cm
Baby changing table	NO
	
Accessible shower available for guests with reduced mobility	Yes outdoor without canopy
Access to the shower room if separated from the toilet room	via ramp length 15 cm, width 90 cm, slope 21 %
Useful width of the door/entrance gate if separated from the toilet room	90 cm
Shower type	open-type
Floor-level shower	YES
Shower chair	missing
Grab bar	missing
Presence of shower head or ups and downs	fixed shower head
Electric doorbell/phone	NO





Changing room

Accessible changing room available for guests with reduced mobility	NO
---	----

Beach

Type of beach	sand
Access to the beach	with a step 10 cm then via a ramp length 120 cm width 90 cm gradient 19 %
Walkway to reach the umbrellas	YES
Type of walkway	PVC
Walkway width	90 cm





	<p>Beach walkway, step and ramp</p>
<p>Removable Platform between the walkway and the umbrella station to facilitate the passage and parking wheelchair</p>	<p>YES</p>
<p>Amphibious beach chair available for helping people with reduced mobility to enjoy swimming (owned by the establishment or by association)</p>	<p>YES</p>

Children's play area

<p>Children's play area</p>	<p>missing</p>
-----------------------------	----------------

Swimming pool

<p>The property has a swimming pool</p>	<p>NO</p>
---	-----------



Project promoted by



Regione Toscana

Doctors' Offices/Healthcare Facilities

Hospitals near the facility	NOA NUOVO OSPEDALE APUANE Via Enrico Mattei, 2, 54100 Marina di Massa MS tel.: +39 0585 4931
Other Healthcare Facilities	Località Partaccia via delle Pinete 197/b Marina di Massa Tel.: +39 335 8001617

TESTED BY: Handy Superabile Social Promotion Association in summer 2023

Project carried out with the contribution of the



**Presidenza del
Consiglio dei Ministri**
Ministro per la disabilità